

Cool Incubator48

Automated Refrigerated Storage



★ Refrigerated Storage for Low-Temperature Samples

Samples, Antibodies, Culture Media, etc., that require low temperature storage

Holds up to 48 SBS Standard Micro-Plates

Optionally supports Deep Well Plates

★ Auto-Transport (automatic loading and unloading of plates)

Unique Shutter system minimizes changes to the internal environment of the chamber when plates are loaded/unloaded.

★ The drive system is located outside the refrigerator

Isolating Transport Robots and Sensors from Condensation Environments reduces the risk of breakdowns

★ Uses natural refrigerant R290 (propane) : Depending on the chiller

★ Consideration for Cleaning the Chamber

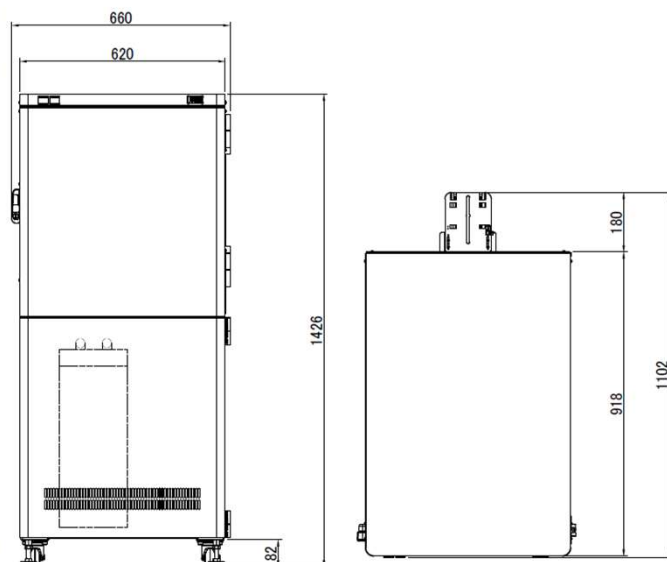
Achieves a Clean and Flat Surface in the Chamber

The Rack and Carousel are easily attached/detached without tools.



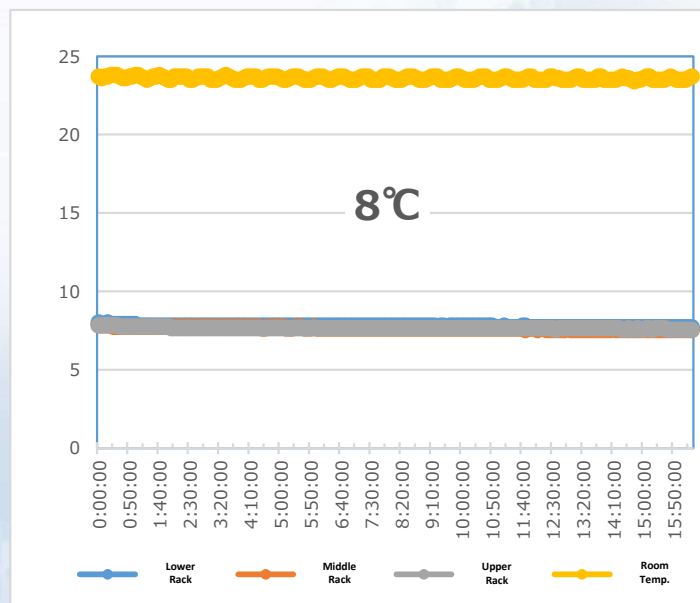
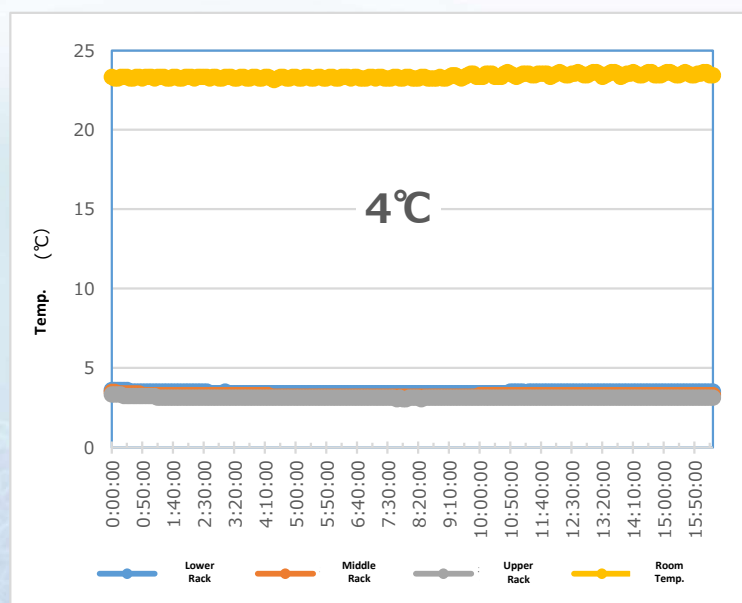
Specifications

Product Name	Coo Incubator48
Model Number	iPCI-0806-CHL-01
External Dimensions (W×D×H : mm) ※excluding projections	660 x 1,102 x 1,426
Weight	Approx. 260 kg
SBS-standard microplate capacity per unit	48 Plates [※] /6 Rack
Power Supply	100V 11 A
Temp. Control	Depends on the Chiller Unit (standard uses natural refrigerant)
Control	Laptop C and Software



*Maximum height: 26 mm. Deep well plates are also available as an option. Please contact us for details.

Temp. Measurement Data



Information current as of February 2026. Design, specifications, and appearance may change without notice. This product is sold for research use only.

Please feel free to contact followings any question or request.



RORZE Lifescience Inc.

Zip Code:305-0854
 430-1 Kamiyokoba, Tsukuba, Ibaraki, Japan
 Tel :029-875-9330
 Web Site: <https://www.rorze-ls.com/en>
 Email: sales@rorze-ls.com